

Miller Farms

"Nature has undoubtedly mastered the art of winter gardening and even the most experienced gardener can learn from the unrestrained beauty around them." - Vincent A. Simeone

Weedin's

January 2009



Pruning Time Prune fruit trees, roses, and other deciduous ornamentals. If you are not sure how to prune attend our pruning workshops this month or just stop by and we can help you with your questions in the store.

Camellia Blossoms
The early blooming Sasanqua Camellias are leaving colorful piles of flower petals. Rake up the fallen petals to prevent the spread of blossom blight.



Happy Garden Tools
Oiling and sharpening

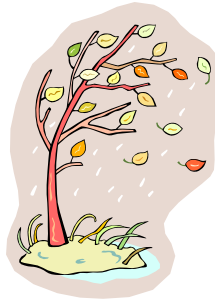
your tools will make the garden chores a breeze. Clean any soil off the tool and then use a rasp type file to sharpen dull edges. Follow the existing bevel (slant) of the tool. A coating of motor oil will keep rust at bay. Sand any rough spots on wooden handles and apply linseed oil.



Disease-B-Gone

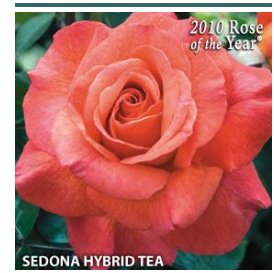
Dormant spray deciduous trees and shrubs. A combination of Lime sulfur and oil will kill any overwintering fungus on your apples and pears. Spray peach trees with copper sulfate (Micro-cop) to combat peach leaf curl. **Dr. Earth** now has a natural dormant spray called **3 Controls** and consists primarily of

Clove Oil.



Give them air!

During breaks in these strong winter rains you might take a cruise of the garden to take note of how the soil is draining. Water that does not drain away within a few hours after a storm indicates poorly drained soil. Many plants will actually drown if their roots can't get to air within that period of time. You may want to replant them in a better spot or raise the bed so at least some of the roots have access to oxygen.



Roses are here!

Jackson and Perkins Roses and Weeks Roses are all in and looking great. This year there over 50 varieties of roses to choose from. This includes some of the 2010 introductions such as: Enchanted Evening, a beautiful and fragrant lavender. Also in is Pink Promise, the official rose of the National Breast Council Foundation. We have a nice selection of hybrid teas, floribundas, David Austin, shrubs and climbers. Most roses need full sun (minimum of 6 hours) and well drained soil. A

The Hoopla Over Bareroot



The weather is cold and rainy, the soils are soggy, and why would you even want to venture to the nursery this time of year, let alone buy a leafless bunch of twigs? The number one good reason: Bareroot fruit and ornamental trees and shrubs are a good buy. Compared to buying a container grown plant it can be at least half the price. Also, the selection of fruit trees and berries is the best it will be for the entire year.

The plants themselves will rebound quickly from being unearthed and make themselves at home in your own native soil. The best preparation you can before you bring your new plant home is to select a site that has well drained soil and at least a half a day of sun. The planting will be quick and easy. If your soil is mostly clay you will need to lightly amend it with a planting mix, such as 'Gardener **and Bloome Planting Mix**'. A little 'Dr. **Earth Starter Fertilizer**' will ensure it gets off to a good start. Soon you'll be anticipating the flowers and or fruit of your new plant.

What's Growing on?

Grevilleas are tough, drought tolerant shrubs that are in bloom right now. The bright red blossoms attract humming birds.



Hardenbergia violacea (a.k.a Lilac Vine) is in full purple bloom. Small sprays of purple pea like flowers appear in late fall and winter. A fast growing vine that needs a least 6 hours of sun.

For outdoor container growing we have some beautiful **Cyclamen**. This is a wonderful winter plant that will

give loads of color even in the dead of winter. Cyclamen need cooler temperatures to thrive. Bring them inside for short periods of time and then let them "cool" off outside.

Camellias are a great plant for a semi-shady garden. They have deep green foliage and offer a showy winter bloom. The sasanquas are already in bloom, tons of dainty flowers along the previous seasons growth. The larger flowering japonicas will soon be following.

More winter brighteners: Primroses, Violas, Pansies, Calendulas, Paludosum

Daisies, Ornamental Cabbage and Kale, and Heathers.

Don't forget to plant any bulbs you might be chilling in your refrigerator. .